



Holmes Chapel Partnership Community Newsletter Issue 117 MAY 2024

WELCOME TO THE MAY NEWSLETTER!

Nature is bursting out all over - despite the chilly temperatures so far this spring. Our community is just as active: there are gardens to visit, talks to listen to and there are plenty of opportunities to get involved as well.

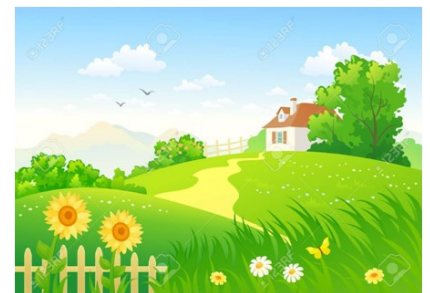


Mr Styles has been keeping us busy at Holmes Chapel Partnership! Ever since the proposal in the last Newsletter to run tours and appoint Tour Guides we have been the focus of the press and media - not just local but national and international! Who knew so many people read our Newsletter? See inside for more details of how Holmes Chapel made it onto the world stage in the wake of its most famous son!.

In support of our Safe Walking Routes to School campaign, we are holding our annual **Walk to School Day** on **Thursday May 23rd**. The theme this year is Magic. Do join us! For further details see inside.



To add to the interest of the Newsletter we have invited the u3a Creative Writing Group to showcase their work. Last month we featured a poem about Spring and this month's contribution considers the joys (or otherwise!) of living in the country.



Talking of life in the country - we have the opportunity to visit magnificent country gardens and raise money for charity. Details of Goostrey Open Gardens (right) and a garden in Kermincham (left) are to be found in this issue.



Best Wishes from your Partnership Team!

For more information visit www.hcpartnership.org.uk

Holmes Chapel Partnership's auditions for Harry Styles Tour Guides

Well, we certainly caused a ripple by advertising and interviewing potential Tour Guides! The world's media wanted to come and film the auditions but we didn't think that was very fair, so we said no and with the help of Calvin Marketing, we kept the press away - well, mostly. A Sunday Times journalist was pretty persistent and made his way to Holmes Chapel - twice! It seems that good news stories are as rare as hens teeth nowadays because the story appeared the next day.



We were really looking for local youngsters, and not so youngsters, as they obviously have connections - attending the same schools as Harry, playing for the same local football team, knowing the same people he did. We were really not looking for applications from all round the

world! We luckily had a response too from people who live locally and we were successful in recruiting the number of people we had hoped to recruit. They don't all come from Holmes Chapel but are keen to get involved and all displayed great qualities

For one of the tasks for the interview our candidates had to pretend they were standing under the Twemlow Viaduct with a group and give a short presentation. There had been some impressive research and the interview panel also learned quite a lot about the history of the Viaduct during the process - not to mention about Mr Styles and his fan base!

There was also a Harry Styles multiple choice quiz and of course, questions about Holmes Chapel, because the potential customers for a tour will obviously already know a lot about Harry, but we would like them to become more aware of the place he grew up. There were also, of course, individual interviews and an opportunity for the candidates to ask questions.



It was a very pleasant day - at least for the interviewing panel - meeting these Harry fans who were all generally delightful and thoughtful people.

We would also like to thank the staff at the Community Centre who took care of us during the day despite visitations from Darth Vader and friends!

A training session for the successful applicants is planned for the end of May, as well as a day for the Press and various

negotiations with the BBC for coverage are underway. The first tour will be in early June so watch this space

Riding to the Rescue!



Holmes Chapel Partnership Chairman Peter Whiers with (left) Hazel Sutcliffe, Vice Chair and (right) Gail Griggs, the Partnership's invaluable admin, website and social media person. Far right Karoline Peach who has a foot in each camp as she belongs to Holmes Chapel Partnership and works for Calvin Marketing and far left Claire Booth who also works for Calvin.

When Peter Whiers wrote in the April edition of the Newsletter in his Chairman's piece that the Partnership was going to run Harry Styles tours and would be recruiting guides, we never anticipated the reaction from the media – not just the local press but also national and international media outlets. Who knew that the subscription base for Holmes Chapel Partnership Community newsletter was so wide?

It was all pretty overwhelming for a small organisation. Riding to the rescue came Karoline Peach and Diana Stephenson, who owns Calvin Marketing a PR firm based near Jodrell Bank. They have been invaluable in helping us field enquiries from the media and generally giving us advice on how to handle the situation. We already had some experience of media interest last year when we published the map suggesting that Harry's fans should approach the Twemlow Viaduct from Hermitage Lane, and not venture down the dangerous A535. We soon had BBC Look North helping us prove our point and many others followed. However the interest shown in the Harry Tours project is many times greater than last year's media flurry, and Holmes Chapel Partnership is grateful to Diana and her team at Calvin Marketing who have advised us throughout the Tour Guide appointment process.

We got more of a response than we bargained for!

Argentina

Canada

Spain

Texas

Mexico

Australia

California

In the last Newsletter we mentioned our plans to set up a Harry Styles Tour around Holmes Chapel and that we would be looking to recruit a few tour guides. The response was **ASTOUNDING**. It looks like the world's media outlets even read our Holmes Chapel Partnership Community Newsletter – or at least any mention of Harry Styles draws them in!

We are planning a tour starting at 10am which lasts a couple of hours, starts at the station and finishes in the centre of the village. After that we are hoping that the people participating in the tour will head off around the village for some lunch, bringing extra business to our food outlets.

As for the tour guides – we were hoping that local youngsters and, maybe not so young people, who know a bit about Harry Styles, or even have connections with him might apply. Fortunately we do have applications from people like this but we have also had applications from all over England and from all around the world – over 150 of them!! One application was even in Spanish! The power of Harry is amazing.

France

Wales

Hungary

Switzerland

Belgium

Germany

Scotland

Netherlands

Belarus

Romania

Sweden

WALK TO SCHOOL WEEK 2024



Holmes Chapel Partnership is inviting **YOU** to celebrate the magic of walking on Thursday 23 May in support of Walk to School Week.

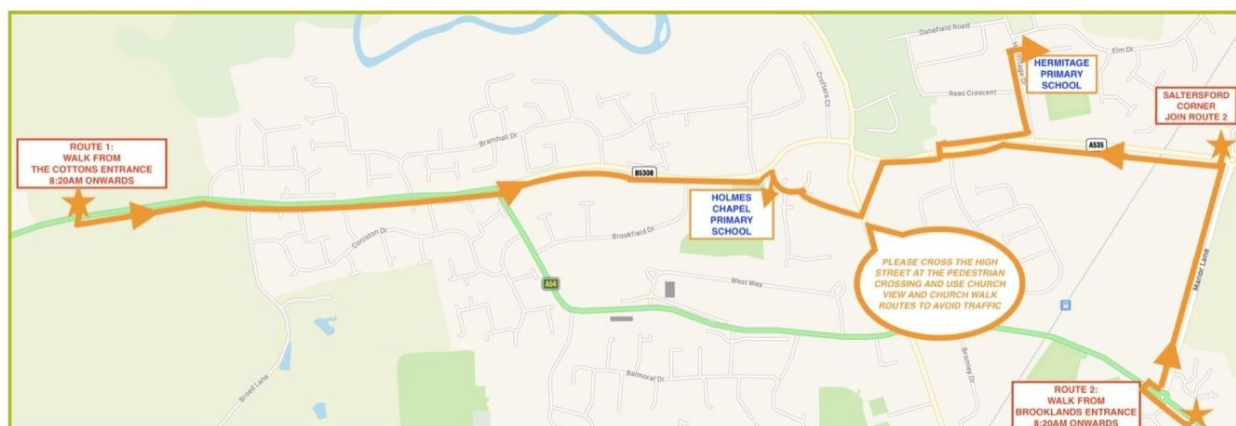
Please join us in highlighting how important safe walking routes are to children living in our village.



Magical inspired accessories are encouraged for walkers of all ages!



There are two organised routes departing from each end of the village or you are welcome to choose your own!



For more information visit hccpartnership.org.uk and livingstreets.org.uk



Holmes Chapel Community Cinema



It is with much sadness that we have to announce that **Holmes Chapel Community Cinema (HC3)** showed its last film for the foreseeable future on 25th April because our film and screening equipment partner, Reels on Wheels, has ceased trading. We are searching for an alternative provider, but as yet have been unable to identify one. A number of other organisations in the local area are also affected and we will endeavour to find a solution.

If you have a Loyalty Card and/or a Free Film Voucher we would ask you to hold onto them, as if we are able to continue at sometime in the future these will be honoured.

We would like to express our thanks to all the local businesses who have supported us over the last 10 years: Holmes Chapel Community Centre for providing a wonderful location, Kerry, Chloe and Mary at Holmes Gifts and Interiors for helping to sell our tickets, David at The Print Room for providing us with the Posters and all the local organisations who displayed our posters.

And an especially large THANK YOU, to everyone who came to one of our film screenings. Without you all there would have been no HC3.

So it's goodbye and thank you for now from the Community Cinema Team - David, Helen, Howard, Martin, Judith and Andy.

Speedwatch Update

Speedwatch is looking closer to getting up and running! We have now agreed a date in June for training with PCSO Pam Graham.

We would still like to attract more volunteers to carry out Speedwatch monitoring. We already have all the necessary equipment which is very straightforward to use and we have proved that by carrying out monitoring sessions we do slow the traffic down and make drivers more aware of their speed.

Please do get in touch if you could join the team and do your bit for your community, by emailing me at hazel.sutcliffe@hcupartnership.org.uk

The Speedwatch training will take place in **The Massey Room at St Luke's Church Hall on Wednesday June 12th at 7pm**

Hazel Sutcliffe



Parish Council News



Over the last few years, flooding on Jubilee Walk has caused an issue for residents, especially when taking children to school. The Parish Council raised this issue with ANSA, and sent them a proposal for improving a key section of the path. We were delighted that a few weeks ago, ANSA made those improvements. We hope this will make a significant difference to those who use Jubilee Walk. We will continue to keep an eye on that area especially after periods of heavy rain.

D-Day took place on 6th June 1944 and ended on 30th June 1944, resulting in the Allies establishing a firm foothold in Normandy. It was significant as it was the start of Allied operations which would ultimately lead to the defeat of Nazi Germany and the end of the Second World War. It was the largest naval, air and land operation in history and required unprecedented cooperation between international armed forces.



156,000 Allied Troops landed by sea and air on five beaches in Normandy. Less than a week later, the beaches were fully secured and over 326,000 troops, more than 50,000 vehicles and over 100,000 tons of equipment had landed in Normandy.

It is believed that over 4,000 Allied troops were killed by German soldiers defending the beaches. By August 1944, all of northern France had been liberated and by spring 1945 the Allies had defeated Germany.

Nationally and internationally, the 80th Anniversary of D-Day is being honoured through the lighting of beacons and the reading of a specially composed tribute. Join us here in Holmes Chapel as we join this national commemoration:

6.30pm – The Bells of St Luke's ring out for Peace.

8.15pm – Churches Together Service – St Luke's Church

9.15pm – Reading of the Tribute and lighting of the Beacon in the grounds of St Luke's Church

Summer Celebration Weekend 5-7 July

Friday 5th July 6-11pm – Given the huge success last year, the Parish Council is funding the closure of London Road through the centre of the village again to enable residents to come together and enjoy a relaxing evening in our remarkable historic centre! There will be live music and local businesses serving great food and drinks.



Saturday 6th July, Holmes Chapel Summer Celebration Event at Holmes Chapel Community Centre, 2pm-9pm.

Come and join Everybody Health and Leisure for a fun filled afternoon for the whole family. Including, family activities, sand castle building, bouncy castle, skate park, smoothie bike, magician and face painting. Dance the afternoon away whilst listening to local live bands and Meatloaf Tribute act. Enjoy every sip and every mouthful of their refreshments, BBQ & pizzas provided by their Taste for Life café. Plus so much more! Find out more www.everybody.org.uk or follow Holmes Chapel Community Centre on Facebook: holmeschapelcc

Saturday 6th July 7pm – Holmes Chapel Chorus Concert in the Holmes Chapel Leisure Centre

"For the Love of Music" concert is taking place – tickets cost £10 and bring your own picnic for an interval with a difference!

Sunday 7th July 12-4pm – Holmes Chapel Village Fair

Head down to the Victoria Club for great family entertainment - stalls, fair and much more! More info to follow!

Keep up to date with all the information for the Summer Celebration via our website: [Summer Celebration | HCPC \(holmeschapelparishcouncil.gov.uk\)](http://Summer Celebration | HCPC (holmeschapelparishcouncil.gov.uk))

CAN YOU HELP?

We are looking for volunteers to help with the Friday 5th July evening event and the 6th July family event at the Community Centre. Please contact the Clerk if you are able to offer some time by emailing clerk@holmeschapelparishcouncil.gov.uk or call 01477 533 934. Thank you!

Bridge the Gap offers New Food Delivery Service

A new food delivery service will be available in the Holmes Chapel area, thanks to a joint collaboration between Bridge the Gap and the Old Saw Mill with funding from the 'Flourish Fund'. There has been a review of costings and the meals will now be priced at £10.00.

Each meal is a homemade, two course meal cooked from locally sourced ingredients and delivered fresh, so it can be re heated over the next three days, or frozen straightaway. Meals range from Shepherds Pie, to Sausage and Mash, Roast Chicken, Beef Hotpot, Lasagne and Quiches. Allergies can be accommodated - dairy, gluten free and vegetarian.

The meals will be delivered on a Wednesday afternoon by volunteers who will have time for a chat - this will be the start of Bridge the Gap's befriending service.



Middlewich & District Foodbank

For anyone referred to them, the Middlewich & District Foodbank now has a collection point at the **Holmes Chapel Community Centre** on the **first Thursday of each month from 5.30-6.30pm**

For more information on how to access emergency food or how to donate food:



PHONE: 0771 227 9949

WEBSITE: <http://middlewichdistrict.foodbank.org.uk/>

EMAIL: info@middlewichdistrict.foodbank.org.uk

Clonter Fair & Car Boot Sale

Plans are underway for this annual charity event at Clonter Opera Theatre in Swettenham Heath, and stall and car boot pitch bookings are now open.

This year the fair will take place on Sunday 1st September and will be raising funds for Visyon <https://www.visyon.org.uk/> and the Clonter Farm Music Trust www.clonter.org



If you are a crafter, artist, local producer or a local group and would like a stall or if you have some treasures to sell and would like a car boot pitch please email events@clonter.org for an application form.

Dane Meadow Update

10th Birthday-take one



Like everywhere else parts of the Dane Meadow have suffered from an excess of water - thank goodness for the solid paths or the whole place would have been a mud bath this spring!

The project to create proper vehicle and disabled access and proper footpaths was undertaken in 2014 so the Dane Meadow as we know it today is officially 10 years old! Holmes Chapel Partnership sourced funding from Natural England of approximately £250,000 worked together with the Parish Council to make this green space accessible and user friendly. The Dane Meadow is home to the Home Grown in Holmes Chapel orchard and a wild flower meadow established by the Cheshire Wildlife Trust. Many people are regular visitors - especially dog walkers - but if you haven't been down there recently this is a nice time of year to see (and smell) the wild garlic in Cotton Wood and nature springing into action after the winter!

(left) This was the elegantly designed sign and the Viewing Platform. when they were newly installed.

10th Birthday-take two



In March 2020 a day or two before the first Covid lockdown the Friends of Dane Meadow organised a tree-planting session. We were greatly assisted in the planting of over 400 whips by members of the u3a. They wanted to plant 10 trees to mark the 10th birthday of the founding of the Holmes Chapel branch of the organisation.

At the time the trees were no more than sticks, so it was difficult to label them properly, but now they have had 4 years to



grow and are more recognisably trees, so a group of u3a members has been out and attached durable labels to their trees to commemorate the anniversary.



The Pond

The main pond was established when the paths were created and in the intervening 10 years has despite our best efforts become over vegetated so that in the last summer or two it has had no water in because the liner is no longer water tight. The Parish Council secured funding to dig out the pond again and install a new liner. This work was due to be carried out in January but for various reasons got delayed and then the frogs started breeding.

So it will now take place hopefully in the summer months.

However with all the rain that we have had over recent months there has been no shortage of water in the pond!

CommuniCARE - 2 years on

This month sees Holmes Chapel & District CommuniCARE successfully complete its second year of operation since the restart, during which time our dedicated volunteer drivers have been providing a vital service to the residents of Holmes Chapel, Goostrey and surrounding villages.



CommuniCARE takes those in need of transport to medical and health related appointments with a caring door-to-door car service. The impact of this service can hardly be overestimated, as for many it takes away the unpredictability and stress of public transport, or the high cost of taxis, and provides a friendly and relaxed journey to appointments.

Over the past 12 months demand has increased significantly, to the extent that we are now regularly handling around 90 requests each month. Whilst we have increased our driver pool by a third, in order to maintain this level of service we urgently need additional drivers and are looking for caring and compassionate individuals to join us. Drivers use their own vehicles and can offer as much or as little of their time to suit their lifestyle and commitments. Drivers are reimbursed for the cost of fuel. As a volunteer driver you can help ensure that members of our community can access the support they need for visits to hospitals, dentists, opticians and the like.

A small amount of your time can make a huge difference and driving for CommuniCARE can be stimulating and very rewarding.

Should you be interested in becoming a volunteer, CommuniCARE now has it's own website at www.holmeschapelcommunicare.org.uk where full details of our operations may be found.



We can also be contacted by email: hccommunicare@outlook.com or telephone **07856 469508**. For booking a driver, please use our phone line.

Want to Dance?

Breakaway Dance Club invites you to join them at their weekly ballroom dancing sessions.

Dance to live music on a Saturday evening! We start at 8pm and tickets to the dance cost just £5. You bring your own drinks and nibbles, but there's a raffle to contribute to and a chance to play a round or two of bingo too.



The dances take place at:

Lach Dennis Village Hall on **4th May, 11th May and 18th May**
Byley Village Hall on **25th May**

For more information contact David Monks on 01477 532935

Tuesday Talks at Holmes Chapel Library

2:30 pm on 2nd Tuesday of each month

Tuesday 14th May

Nether Alderley Mill

An illustrated presentation by Mike Tingle, Volunteer Guide



NAM, owned by the National Trust, is operated by volunteers.

Who built this unusual-shaped mill? And **when**?

How is it powered?

What makes its 19th Century machinery unique?

Hear its history, & learn how it still processes high quality organic wheat into stone-ground wholemeal flour.

Free Entry Donations to the Mill are welcome

Next Talk: Tuesday 11th June - **The Stanleys of Alderley**

The Countryside

Oh, I do so love living in the countryside, I cannot imagine living anywhere so beautiful, no noisy traffic and exhaust fume, no nosy neighbours, no members of the public constantly passing by my window, looking as they do, just clean fresh air to breath in. Surrounded by trees and rustic hedges as I am, I feel so lucky to live here, hearing only the birds and the occasional moo and baa, ahhh, what bliss.



Oh, I do so love living in the countryside, oh, is that the farmer I can hear, yes, he's going up and down his fields on his tractor, what fun! Hang on, what's that awful smell? Oh heck, the farmer is spraying his crops again, quick everyone, get all the windows shut for goodness' sake or else the whole house will stink. Oh no, I forgot the washing, I'll have to fetch it in or everything will have to be washed all over again. Flipping heck, I spoke too soon about clean fresh air, I take it back. Sometimes we have nice clean fresh air in the country.

I do so love living in the countryside, those trees we're surrounded by are awesome, but they do like to share, don't they? First, it's those funny fuzzy things that look like caterpillars, they do get everywhere, and then the blossom, so pretty high above, but quite messy when they fall and it's wet, and then the acorns tap tapping on the windows and roof, and my head if I get in the way, and then the leaves, so colourful! They all really keep on giving, and keep us busy sweeping up forever. It's hard work now we are older, it used to be nice living here.

Oh, I do love living in the countryside, well, sometimes anyway. We may as well tootle off for a little ride out, and really drink in that wonderful clean country air. Travelling along narrow country lanes at a leisurely pace, enjoying the sights and sounds with no frantic traffic everywhere.

Oh dear, we've hit a queue, and up ahead there's a tractor which is taking up all of the road. No chance of overtaking then! Now, I'm not sure where I heard it, but I understood that tractors were obliged to pull over when there are at least ten cars stuck behind it, but I've never found out if it's true, as I'm usually in a queue of eight or nine cars, so we'll have to grin and bear it. Thankfully it's turning off into a yard, so off we go again, enjoying the lovely countryside.

The Countryside, continued from Page 13...

Just as we manage to get to a decent speed, another bend reveals another queue, this time it's a long line of Lycra bums holding us up – snails pace it is again then!

Well, I do like living in the countryside, it really is so peaceful, and the evenings are full of the sounds of nature all around us. When it goes dark, it really does go dark, and apart from the stars that are visible on a clear night, and the glow of the full moon once a month, then dark means dark. I mean we do have street lights dotted about, but only on the road through the village itself, and then nothing! Because of this, we set up sensor lights around our house, so any movement will cause the lights to be triggered – very useful.

The only drawback was the little nocturnal creatures that kept triggering the lights, which, at first, was a real bonus, how lovely it was to see so many hedgehogs and foxes wandering about in the garden, completely unfazed by the intermittent lights, but after the novelty of the nature watching wore off, and so many disturbed nights, hubby decided that enough was enough, and turned them all off. Lovely - now for a really good night's sleep!

That is, until about 4 or 5 o'clock in the morning, when there is a tsunami of dance classes on the roof, first it's clog dancing followed by tap dance practice, and then of course, the hobnail boots arrive with their pick axes, to make sure we're awake. Of course I'm talking about the crows, rooks, pigeons and magpies, and soon after the squirrels arrive to play catch, and hide and seek. Such fun listening to all those lovely sounds of the countryside!

Speaking of squirrels, I used to spend hours at the window watching them play in the trees and hedges, and spent a small fortune feeding them and the birds with all their favourite treats, that is until all the nuts were being buried in newly planted pots, and fresh flower beds were uprooted to provide a secret hiding place for the nuts. We only feed a few birds now, the nice ones you know, the ones who don't make a mess everywhere, plus we've made a den for the little hedgehog who likes the bottom of our garden, bless him.

So, yes, it is lovely living in the countryside, but I must admit, I have been giving a bit of thought to what it might be like to live by the seaside, and then, I remember those blasted seagulls, mmmm, better the devil you know, perhaps!

Sue Heywood
u3a Creative Writing Group

Open Garden

Rowley House, Forty Acre Lane, Kermincham CW4 8DX

Tim and Juliet Foden are opening their garden and grounds

Sunday 26th May from under the National Garden Scheme

Sunday 2nd June for the Cheshire Wildlife Trust

11am – 4.30pm £6 entry - children free



The rhododendrons will be flowering and the Japanese maples are looking good. There are many unusual trees to see like the Handkerchief Tree so called because it has white hanging bracts which look like handkerchiefs hanging from the branches!



The wildflower meadows are at the height of their glory by the end of May with a variety of native plants like ragged robin, the flower in the photograph.



There are woods as well for you to walk through and admire the wood sculptures of Andy Burgess.

Once again the Ladies of Swettenham Parish will be serving teas and their delicious home made cakes in the garden . The proceeds go to St Peter's Church, Swettenham.

There is plenty of seating around the gardens and meadows. The garden is mostly wheelchair accessible but not the meadows. Adequate parking on site and toilets. Dogs welcome.

To get there take Macclesfield Road out of Holmes Chapel follow the A535 to Twemlow and turn right at the Yellow Broom.

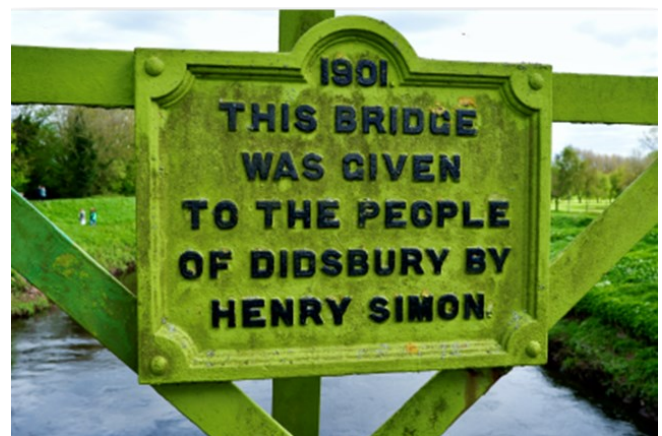
Holmes Chapel Railway Station Corner by Tony Wright - May 2024



The hourly Northern service to East Didsbury Railway Station from Holmes Chapel Railway Station runs throughout the day at 28 mins past the hour (as always check before you travel). Recently, at the far end of the Manchester platform, you have been able to see wonderful sweeps of blue forget-me-nots or scorpion grasses.

Linnaeus originally described the species as *Myosotis scorpioides*. The foliage was named by the Ancient Greeks as 'mouses ear' but our woodland forget-me-nots are probably related to *Myosotis sylvatica*. The Alpine forget-me-not (*Myosotis Alpestris*) was adopted as the state flower of Alaska in 1949. I'm happy to hear from any travelling botanists about these conclusions. I hope our image of the ladybird on the flowers gives you an idea of how attractive these flowers were if you missed them.

The reason for this railway journey was to visit the Fletcher Moss Botanical Gardens and Parsonage Gardens in East Didsbury. Head for Stenner Lane, some 15 minutes walk, turning left down Wilmslow Road when leaving the railway station. This area has been for public use since 1915 and now includes walks by the River Mersey. Look out for St. James & Emmanuel Church, The Croft and Simon's Bridge. Emily Williamson lived at the Croft from 1882 to 1912. She founded the Society for the Protection of Birds (now the RSPB) in 1889. A photograph of Emily Williamson can be seen on the right.



At one time Northenden, near the edge of these walks, was a major crossing point of the Mersey on the salt road from Cheshire to Manchester.

This attractive green bridge was a legacy of a famous German engineer of the time living in Manchester, Gustav Heinrich Victor Amandus Simon, known as Henry Simon who, inter alia, revolutionised Britain's flour milling industry.

Home Grown Update



At Home Grown we are asked a great many questions. Usually they are simple, like “what are you growing?” More complex questions are “When can we pick the fruit and vegetable?” and quite often “How do you cook it?”

To make things simple we have installed some QR codes which link the fruit or vegetable to a recipe page. Just scan the code.

When to pick the fruit and vegetables is a more difficult question. Obviously the weather affects whether the fruit or vegetable is ready. So please take note of our **Leave me** or **Pick me** signs. I was asked if we are growing spring onions. The short answer is no. We are growing three varieties of onions and garlic, which will be ready from July.

We have had a wet spring but the vegetables and fruits by the Health centre are doing well. The broad beans are flowering and attracting lots of ladybirds to feast on the black fly. Strawberries are beginning to flower and the chard is still going strong. Chard is a great leaf vegetable, which you cook just like spinach. The rhubarb is getting bigger. Don't forget that you pull the rhubarb off the main stem, not cut it. And do not eat the leaves as they are toxic.

On **May 4th** we are asking those of you who joined our seed sowing sessions in March and April, to bring back some of the plants. These will then be grown on in our beds at the Health Centre.



On **May 18th** we will be having our **Annual Plant Swap** from **10am until 12 noon** outside the Health Centre. You don't have to bring anything along, although that would be nice, but you can take anything you like. There will be a variety of fruit and vegetable plants on offer, along with some garden plants and some indoor plants. And we will also have a variety of plant pots which you are welcome to take away.

Holmes Chapel Village Fair - Sunday 7th July

We have had a huge response for stalls for the Village Fair on Sunday 7th July. Stall bookings are currently paused whilst we see if we can make some more room! We currently have a waiting list. If you haven't managed to send your stall booking form in please still do and we will update you when we can.

In the meantime, if you would like to follow all the latest news about this great family afternoon at the Victoria Club, Holmes Chapel please follow our Facebook page: **HCVillageFair** or email: **hcvillagefair@hotmail.com**



Goostrey Open Gardens 2024

Sunday 9th June 11am- 5pm

15 Open Gardens Open on behalf of East Cheshire Hospice

We are delighted to announce that tickets for our third year's Goostrey Open Gardens are now on sale, having so far raised over £26,000 for the East Cheshire Hospice and other Charities over the past 2 years.

Of the fifteen gardens, there will be ten brand new gardens of all sizes and styles, all located via a pleasant walk around Goostrey, Cranage and Blackden villages. Expert advice is also on hand in some of our gardens on acer growing, viticulture, champion gooseberry growing, growing herbs for well-being and gardening to attract more wildlife.

In addition, we will be repeating our highly successful plant sale this year on the Bog-bean (Goostrey's village green) along with ice Creams from Bidlea Dairy, a Goostrey Flower Club Installation and Clementine, the mobile horsebox bar from the Space Invader Pub. Refreshments will also be available in many of the gardens, so please bring along some old-fashioned cash on the day to help us raise further vitally needed funds for the East Cheshire Hospice in Macclesfield.

Early bird tickets at £10 per Adult will be available until 20th May when the ticket price will rise to £14 per Adult. Accompanied children can view the gardens free of charge. Tickets are available on line via the East Cheshire Hospice website, please visit it for more information or follow us on Facebook or Instagram for latest news and the stories behind the gardens. Alternatively you can purchase (cash only) a limited amount of printed tickets and accompanying brochures from The Trading Post or Goostrey Mini Market in Goostrey.



Visitors enjoying a fantastic day out at our 2023 event.



Advice on growing herbs for well-being will take place in the Wellness Garden (above)

Two Open Gardens opening in 2024 (top & bottom left)

Christian Aid Week 12th - 18th May 2024



This Christian Aid Week Holmes Chapel Christian Aid Group stands alongside

the most poor and needy around the world. In Burundi, malnourishment and poverty affect more than 70% of the population, making survival a daily struggle. Jobs and food are hard to come by, and those who have homes often have no electricity or running water. We dream of a better world. We want every child to be able to have the education they need to break free of poverty. We imagine a future where crops are not flattened by cyclones and washed away by floods. Together, we can help people secure a better future for their families, giving them the chance to achieve their potential. We won't stop until everyone can live a full life, free from poverty. Join us this Christian Aid Week and help turn hunger and despair into hope. With every gift, every action, every prayer, we celebrate and share hope with our sisters and brothers facing crisis around the world.

On Sunday May 12th, we will be holding a United service for Christian Aid at St Lukes Church at 10.30am. Christel Langdon-Griffiths, Church Engagement and Fundraising Officer for Christian Aid in Cheshire, Staffordshire and The Wirral will be speaking about the work of Christian Aid during the service- all are welcome! We would love to see you! Please note that Normal Sunday morning services will be held at St Margarets and the Methodist Church as usual.

Envelopes will be available in our 3 churches on Sunday 12th May for your donation. When completed they will need to be returned to your church or taken to nominated collection points in the village as indicated on the envelopes.

Alternatively we hope that you may feel able to donate using this On-Line Platform instead, specifically for Christian Aid Week in Holmes Chapel, found by using this link online: <https://fundraise.christianaid.org.uk/envelope-2024/holmes-chapel-christian-aid-week-2024>

We will also be collecting donations of your loose change and notes outside the main entrance to Sainsburys and Costa Coffee in Holmes Chapel as well as outside Aldi for periods during Christian Aid week, and will have envelopes available there if you prefer. Look out for our collectors in red tabards!

For those with Smartphones, there will also be a QR code on the laminated poster on the village board.

Alternatively, cheques payable to Christian Aid can be sent to Caroline Wood, 53 Coniston Drive CW4 7LB or our Treasurer, 89 Needham Drive Cranage CW4 8FB However, we hope that this On-Line Platform will work well for you this year and we appreciate and thank you for your ongoing support for Christian Aid.

Any queries, please call Caroline Wood (Holmes Chapel Christian Aid Co-Ordinator) on 01477 535746 or 07742930346

A Decade of Everybody



The 1st of May 2024 marks the ten-year anniversary of local Cheshire East based health and wellbeing Charity Everybody Health & Leisure.



They are set to celebrate with staff, customers and partners including holding a three-day health and fitness event in June [‘The Everybody Games’!](#)

The leisure centres and cafes will also be handing out prizes to those visiting on the 1st May.

Back in May 2014, the independent charity was formed to

operate leisure facilities on behalf of Cheshire East Council. Over the last ten years, the charity has evolved to deliver much more than leisure centre operations and now works with local and regional partners to support the growing health challenges across the borough.

The charities vision is to provide ‘Leisure for Life’ and seeks to make participation in any recreational or leisure activity an enduring habit from the earliest years to later life. This vision is being realised with the charity turnover nearly doubling now at circa £20million which is the result of growing health and fitness memberships to over 25,000, the learn to swim scheme to over 10,000 members and being awarded grants to provide targeted health and wellbeing programmes for people with long term health conditions and rehabilitation.

The estate has grown outside of the Cheshire East Council facilities with Everybody partnering with Holmes Chapel Parish Council in 2016 to create Holmes Chapel Community Centre, which has now become a hub of the community including gym, fitness studios, spa, café, training rooms and events space.

To read the full article, see [A Decade of Everybody • Everybody Health and Leisure](#)

This month's u3a meeting was a Musical Meander around Britain, with songs and stories from Joy and Kevin Siddall. This was very well-attended and was very entertaining. Both Joy and Kevin were very talented and professional, and I was pleased that many members asked for their details afterwards – so much so that we had to get more flyers photocopied. They sang many famous songs and folk songs from Salford, Wigan, Liverpool, Scarborough, Cornwall (imagine you were in a Cornish pub), Scotland, Ireland and Wales, including Sting and the Stereophonics. Everyone enjoyed it and asked for an encore (Mull of Kintyre).

They are happy for me to pass on their details:- ksiddall@ntlworld.com 0770 995 2366

So, if you are interested contact Kevin on the above.

Next month's meeting is entitled 'The Course of True Love.....' on Thursday May 9th at the Methodist Church at 10am. David Shaw is an Authorised Person of Marriages, and has steered many couples through the legalities of marriage, and as he has had a ring-side seat to much comedy and tragedy, has many tales to tell. This will be a light-hearted look and reflection upon times of argument, acts of revenge, untruth, excess alcohol and police presence. He will also work through the history of the marriage certificate with some latter-day quirky stories.

Do come along and join us, we would love to see you there.

Memory Café



There are often some challenging times for those living with dementia but at Memory Café we do our best to give a couple of hours of change from the routine! A friendly welcome, along with a cup of coffee/tea, always awaits and there are opportunities to be involved as much or as little as people choose. Playing skittles might not be for all but an activity at the table might be a choice or maybe just to sit, chat and relax will be the highlight of the morning.

If you think you, a family member or a friend might enjoy Memory Café, do come along and see what it is all about.

This month Memory Café meets on Tuesdays 7 and 14 May. 10.00am – 12.00pm at Holmes Chapel Methodist Church. If you would like more details, please telephone 01477 537679.

'Tuesday Friends'

Do you need a change from sitting at home?
Is Tuesday Friends for you?

An opportunity to come on your own, with a family member or a friend for a chat, cup of tea / coffee and cake.



A quiz on the tables if you fancy a challenge, live music and laughter are always part of the afternoon.

'The Misfits' – Roy and Ray on guitar and Pete with his monologues will be entertaining us

Tuesday 14 May

Holmes Chapel Methodist Church

2.00 – 4.00pm

No set charge but, if you are able, a donation would be appreciated please.

Should you require more details, please telephone 01477 537679



so let's
Keep Singing!

Saturday 11 May at 10.00am
Holmes Chapel Methodist Church

"The People's Favourites"

A wide range of songs this month all chosen whilst chatting over cups of coffee at the end of each session. Buddy Holly, Simon and Garfunkel and musical theatre fans definitely won't be disappointed but hopefully, singing all the songs, along with a couple of hymns, will be enjoyed by all.

No musical talent necessary, just come and enjoy!
18+ years only please.

We sing for about an hour followed by chatting over coffee/tea and biscuits.

VOLUNTEER



THIS SUMMER AT YOUR LOCAL LIBRARY

Are you 13 or over and enthusiastic about books and reading?

Volunteer and help run the Summer Reading Challenge!



Contact your local library to find out more or visit
cheshireeast.gov.uk/libraries

clothes LIBRARY



Feeling Cold? Take a Coat

New 'Clothes Library' for seasonal needs.

Want to Donate a Coat?

Drop in and Drop off!
On Tuesdays between 3pm and 4pm

WASTE REDUCTION VOLUNTEER



Donations can only be made between these times and directly with a Waste Reduction Volunteer wearing this badge, or by emailing: holmeschapelclotheslibrary@gmail.com

Bridge the Gap



Monthly Community Event: All ages welcome as we Bridge the Gap - from the young to the young at heart - babies and toddlers to grandparents and the wider community

Bridge the Gap at Hermitage

Monthly 10am to 11am

You are invited to join us for refreshments and to join in or watch some activities with the staff and children

Month	Date	Planned activity (subject to change)
May	Friday 10th May	Craft
June	Friday 14th June	Shared play – Lego, drawing, construction
July	Friday 12th July	End of Year Show

- **All ages welcome** as we Bridge the Gap - from the young to the young at heart - babies and toddlers to parents, grandparents and the wider community
 - **No need to book just come along**
 - Refreshments—tea, coffee, biscuits and cold drinks

Hermitage Primary School, Hermitage Drive,
Holmes Chapel, CW4 7NP

Holmes Chapel Library Childrens Events



Baby Bounce

**Every Monday
(term-time)**

2.15pm to 2.45pm

Songs & rhymes in a group specifically for babies from birth but not yet walking



Stories & Songs

**Every Thursday
(term-time)**

10.30am to 11.00am

Stories, songs and rhymes for children 2 years and above. Younger siblings of older children welcome



Rhymetime

**Every Friday
(term-time)**

11.00am to 11.30am

Songs & rhymes suitable for all ages. Everyone Welcome!



LEGO Club

Every Saturday

10.00 am to 11.00pm

Come and join the fun!
Just bring your imagination



Barclays Bank

at Holmes Chapel
Library: **Monday, Thursday
& Friday**
930am to 1230pm
1pm to 4pm

Book appointments
on
events.uk.barclays/local
or call 0345 734 5345

Home Library Service

Are you, or someone you know, unable to get to the library due to ill health or poor mobility?

If you live in the Holmes Chapel area, our volunteers can deliver books to your home free of charge.

Call us for more information



Opening hours

Monday	10am - 5pm
Tuesday	10am - 5pm
Wednesday	CLOSED
Thursday	10am - 6pm
Friday	10am - 5pm
Saturday	930am - 1pm
Sunday	Closed

Ask library staff for more information or call us on
01477 689550



Our Patron Sponsors

OUR PATRON SPONSORS

WE WOULD LIKE TO THANK THE ORGANISATIONS BELOW FOR THEIR FINANCIAL SUPPORT TO THE HOLMES CHAPEL PARTNERSHIP

 <p>HURSTWOOD HOLDINGS</p>	<p>HURSTWOOD HOLDINGS</p>	<p>www.hurstwoodholdings.com 40 Peter Street Manchester M2 5GP Tel 0161 220 1999</p>
 <p>MASSEY FEEDS Focused on nutrition</p>	<p>MASSEY FEEDS</p>	<p>www.masseyfeeds.co.uk Massey Feeds, Holmes Chapel Mill Holmes Chapel Cheshire CW4 8EE Tel 01477 536300</p>
	<p>HOLMES CHAPEL PARISH COUNCIL</p>	<p>www.holmeschapelparishcouncil.gov.uk Holmes Chapel Parish Council 1 Church Walk Holmes Chapel Cheshire CW4 7AZ Tel 01477 533934</p>
	<p>BAYFIELDS OPTICIANS & AUDIOLOGISTS</p>	<p>www.bayfieldsopticians.com Bayfields Opticians & Audiologists 2 George Walk, High Street Sandbach Cheshire CW11 1AR Tel 01270 763641</p>
	<p>DUTTON BUILDERS MERCHANTS</p>	<p>www.duttonbuildersmerchants.co.uk Dutton Builders Merchants Dutton Business Park, Holmes Chapel Road Middlewich Cheshire CW10 0QZ Tel 01606 738491</p>
<p>YOU COULD HAVE YOUR LOGO HERE</p>	<p>YOUR BUSINESS NAME</p>	<p>Anything you want here. It could be a picture or promotion with a hot link to something you are running that month.</p>

For further details on Patron Sponsorship please visit our sponsors page

Holmes Chapel Partnership – Working with the whole community